



GETRA

Meat & Fish Processing Equipment



Meat Grinder

Mesin penggiling daging

Selain untuk menggiling daging juga cocok untuk menghaluskan :

- Kacang tanah goreng u/ bumbu gado-gado
- Kacang hijau matang u/ selai kacang hijau
- Kentang matang u/ Perkedel



TJ-8YG

Features

- S/S body
- Reversible switch
- Overload protector
- Power switch
- Include : 2 knives, 2 round blade
- With top handle



TJ-12YG



TJ-22YG

Features TJ-12/22YG

- Stainless steel body
- Include plastic filler tube
- Powerful motor
- Switch power ON/OFF
- Top handle



TJ-32YG



TJ-42YG

Features TJ-32/42YG

- Stainless steel body
- Include plastic filler tube
- Powerful motor
- Switch Knob Start/Stop
- Power Indicator

TYPE	DIMENSION (cm)			POWER (Watt)	VOLTAGE	PRODUCT. CAPACITY (kg/hour)	WEIGHT (kg)	
	L	W	H				Net	Gross
TJ-8YG	19,5	31	36	500	220V/1P/50Hz	80	12	13,2
TJ-12YG	20	37	42	800	220V/1P/50Hz	120	18	20
TJ-22YG	23	47	44,5	1100	220V/1P/50Hz	220	26	28
TJ-32YG	36	69	64	1500	220V/1P/50Hz	320	63	72
TJ-42YG	54	96,5	102	3000	380V/3P/50Hz	600	109,5	135

Note: Daging beku harus dicairkan terlebih dahulu



Meat Slicer

Mesin untuk mengiris daging beku

Semi Automatic

Mesin pengiris daging semi otomatis, body terbuat dari aluminium food grade yang mudah dioperasikan dan higienis. Tebal-tipisnya daging mudah diatur (2 sampai 15 mm). Mata pisau yang mudah diasah. Cocok untuk mengiris aneka daging beku, ham, bacon, keju, dll.



220ES/B-8

250ES/B-10

300ES/B-12

Features

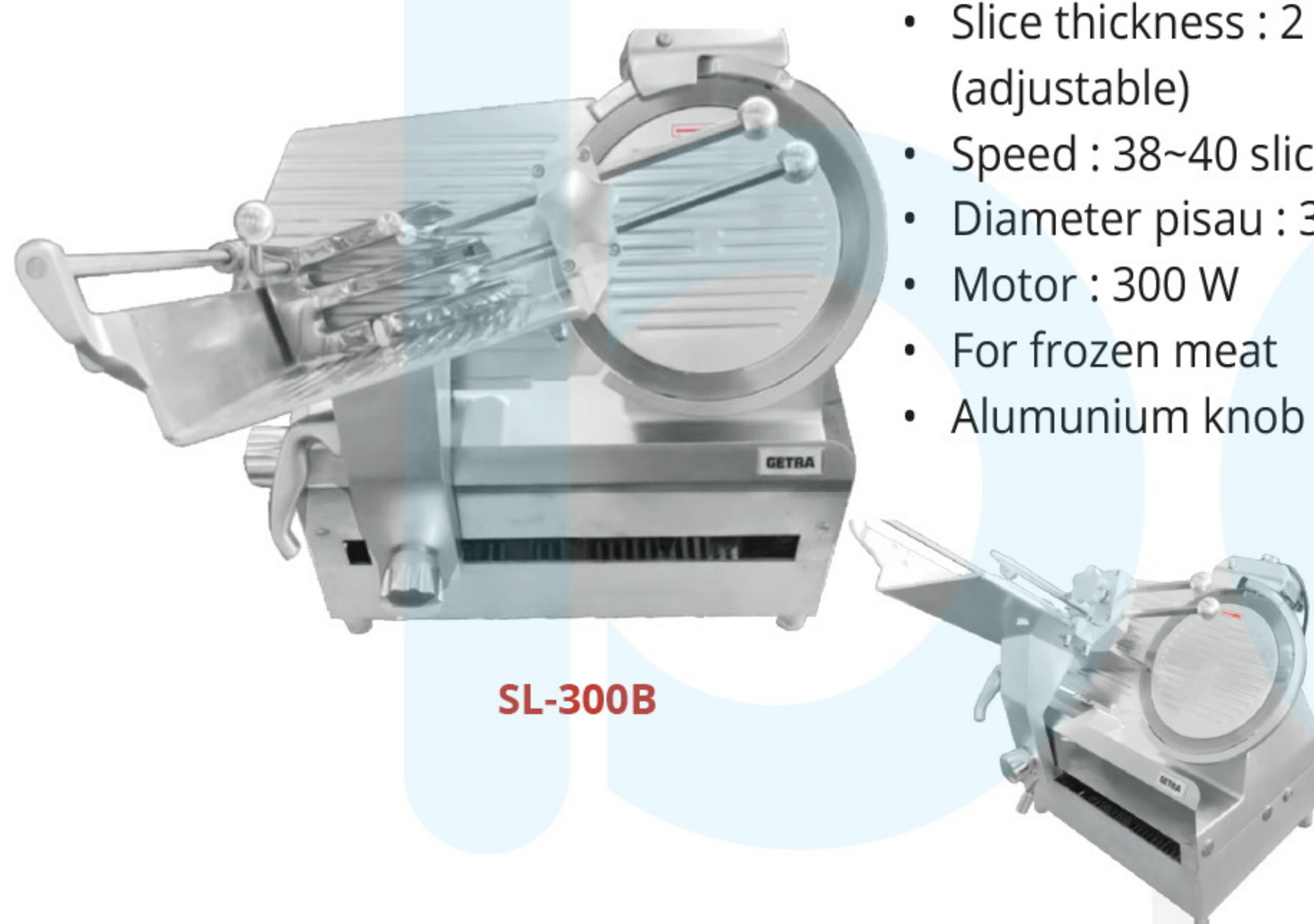
- Adjustable Thickness : 2 ~ 12 mm
- Aluminium knob

TYPE	DIMENSION (cm)			BLADE DIAMETER	THICK (mm)	WATT	VOLTAGE	WEIGHT NW / GW (kg)
	L	W	H					
220ES/B-8	43	38	35	Ø 22	2~12	280	220V/1P/50Hz	14,1 / 15,7
250ES/B-10	48	37	36	Ø 25	2~12	320	220V/1P/50Hz	14,8 / 16,3
300ES/B-12	53	46	46	Ø 30	2~15	420	220V/1P/50Hz	24,4 / 27,2

- Recommended meat temperature: 0 ~ +5°C

Full Automatic

Mesin pemotong/pengiris daging full otomatis, ketebalan iris dapat diatur menggunakan pisau pemotong cakram. Mesin Pemotong Daging ini digunakan khusus untuk daging beku saja.



SL-300B

Features

- Slice thickness : 2 ~ 15 mm (adjustable)
- Speed : 38~40 slices/mnt
- Diameter pisau : 36,3 cm
- Motor : 300 W
- For frozen meat
- Aluminium knob



SL-350B

Features

- Knob adjuster for slice thickness : 2 ~ 18 mm
- Slicing speed 500rpm (+/- 36 slice/minute)
- Start/stop button
- Indicator light
- Double motor, @750W /380V
- Castor, adjustable feet



TYPE	DIMENSION (cm)			BLADE DIAMETER	THICK (mm)	WATT	VOLTAGE	WEIGHT (kg) Nett Gross
	L	W	H					
SL-300B	60	60	75	363 mm	2~15	550 W	220V/1P/50Hz	62 / 78
SL-350B	103	74	146	350 mm	2~18	750W x 2	380V/3P/50Hz	228 / 265

- Recommended meat temperature: 0 ~ +5°C



Mesin pemotong daging



AQPX-5

Features

- Body: Painted body
- Food grade
- Safety device
- Worm type gear driven
- Blade : 2 pcs
- Bowl Speed : 70 rpm



Bowl Cutter dirancang khusus memotong daging juga sayuran dengan cepat. Aplikasi: Pabrik pengolahan daging, seperti : Bakso, sosis, corned beef, dll.



TQ-8

Features

- Body: Painted body
- Food grade
- Safety device
- Worm type gear driven
- Blade : 2 pcs
- Bowl Speed : 70 rpm



AQPX8

Features

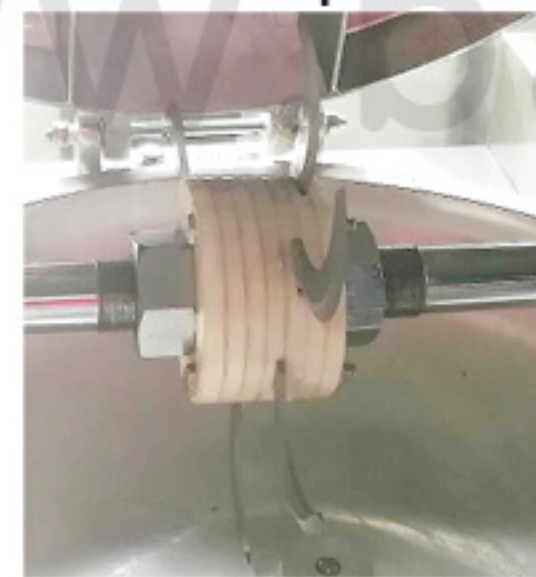
- Bowl & cover S/s (304), painting body
- Blade : 3 pcs
- Switch ON knob
- Emergency stop button
- Safety cover



AQPX20

Features

- Bowl aluminium, cover & body S/s
- Blade : 6 pcs
- Castor/wheel
- Safety cover
- Switch power



AQPX30

Features

- Bowl aluminium, cover & body S/s
- Blade : 6 pcs
- Speed adjuster knob (1-O-2)
- Emergency Stop Button
- Handle cover
- Castor/wheel
- Power indicator
- Safety cover



AQPX50

Features

- Bowl aluminium, cover & body Stainless steel
- Blade : 6 pcs
- Speed adjuster knob (1-O-2)
- Emergency stop button
- Handle cover
- Castor/wheel
- Power indicator
- Safety cover
- Bowl Speed: 45 rpm, blade: 960/1450 rpm



TYPE	Ø BOWL (mm)
AQPX8	480
AQPX20	638
AQPX30	745
AQPX50	920

TYPE	DIMENSION(cm)			VOL. (L)	PRODUCT CAP. (kg)		WATT	VOLTAGE	WEIGHT (kg) Nett Gross
	L	W	H		Dough Capacity / Cycle	Per Hour			
AQPX-5	53	42	54	5	2 ~ 3	25 ~ 40	840	220V/1P/50Hz	57 / 70
TQ-8	80	55	55	8	3 ~ 4	40 ~ 60	750	220V/1P/50Hz	90 / 100
AQPX8	80	53	57	8	7	120	1100	220V/1P/50Hz	82 / 90
AQPX20	77	71	96	20	10	200	1500	220V/1P/50Hz	125 / 156
AQPX30	108	80	97	30	23	500	5000	380V/3P/50Hz	240 / 285
AQPX50	120	100	105	50	40	1000	5000	380V/3P/50Hz	316 / 375

Note:

- Daging beku harus dicairkan terlebih dahulu
- Kapasitas produksi tergantung dari jenis bahan dan kelembutannya.

Fresh Meat Tenderizer

GETRA[®]

bali
coolers
www.balicoolers.com



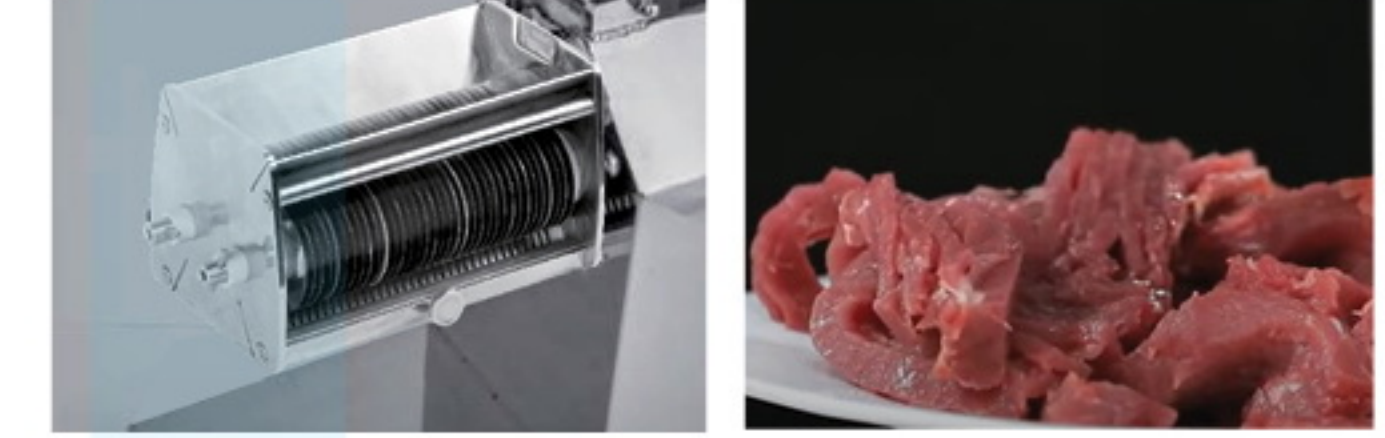
Mesin untuk memotong daging



TR8SH-MSA

Features

- Stainless steel body
- Safe to use & easy to operate
- The slicer knife box is easy to open the lid, so the knife is easy to clean
- Rubber feet
- Thickness of meat: 4 mm
- ON-OFF switch



Slicer Blade:
Dimensi: [24x13x12cm]
Berat : 4 Kg

TYPE	DIMENSION (cm)			CAPACITY (kg/hour)	WATT (220V/1P)	WEIGHT (kg)
	L	W	H			
TR8SH-MSA	48	25	48	200	350 W	11 / 15

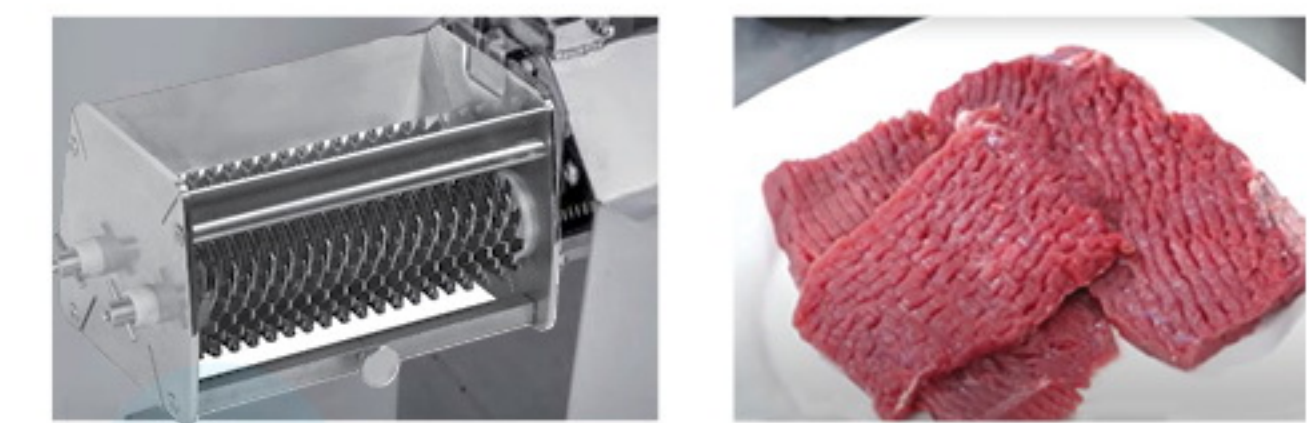
Mesin untuk melembutkan daging segar (untuk membuat steak, empal jadi lunak)



TR8SH-TDA

Features

- Full stainless steel body
- Blade box is easy to open / close



Tenderizer Blade:
Dimensi: [24x13x12cm]
Berat : 4 Kg

TYPE	DIMENSION (cm)			CAPACITY (kg/hour)	WATT (220V/50Hz)	WEIGHT (kg)
	L	W	H			
TR8SH-TDA	48	25	48	200	350 W	11 / 15





Portable

Body : Stainless Steel
S/s blade
Pulley : Ø 12 cm
Recommended cutting size: W.5~90mm, H.10~190mm



JG-120YG

Free Standing

Body : Stainless Steel
S/s blade
Pulley : Ø 21 cm
Recommended cutting size: W.5~150mm, H.10~220mm



JG-210SJY

Body : Stainless Steel
S/s blade
Pulley : Ø 26 cm
Recommended cutting size: W.5~200mm, H.10~320mm



JG-300SJY

Body : Stainless Steel
S/s blade
Pulley : Ø 30 cm
Recommended cutting size: W.5~300mm, H.10~420mm



JG-400SJY

TYPE	DIMENSION (cm)			WORK AREA HEIGHT (cm)	SLICE THICKNESS (cm)	L. BELT (cm)	WATT	VOLTAGE	NW/GW (kg)
	L	W	H						
JG-120YG	50	40	77	15	1 ~ 8	117	800	220V/1P/50Hz	30/41
JG-210SJY	55	52	95	21	0,4 ~ 18	165	1100	220V/1P/50Hz	51/64
JG-300SJY	65	51	104	30	3 ~ 20	212	2200	220V/1P/50Hz	75/94
JG-400SJY	63	61	186,1	40	3 ~ 25	250,2	2200	380V/3P/50Hz	84/105

Dice Cutter Machine

Mesin pemotong daging ini dirancang untuk memproses produk daging beku seperti : Sapi, domba, pork, ayam dan unggas menjadi potongan berbentuk irisan (strip) dan bentuk dadu dengan ukuran ketebalan (11 mm).



RD-350



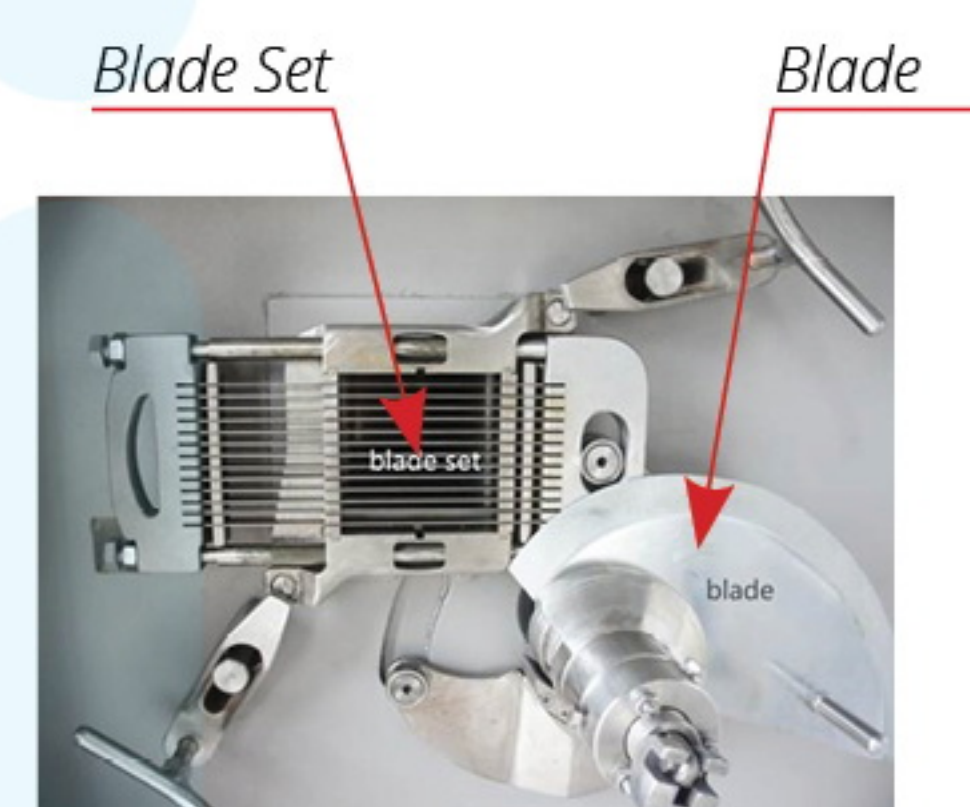
Dice slice



Strip slice

Features

- Control panel, power switch, indicator light
- Body S/s 304
- Include one set of dicing blade (blade set & 1 blade), material steel
- Include blade set size: 11 mm
- Transparant window sight on blade chamber



Optional Blade (Exclude)

- Additional Blade Set (strip size : 5mm, 6mm, 7mm, 8mm, 9mm, 11mm, 13mm, 16mm, 20mm, 27mm) (choose one size)

Note : Blade set adalah per harga satuan ukuran

- Recommended meat temperature: -1 ~ -3°C

TYPE	DIMENSION(cm)			CAPACITY (Kg/hour)	WATT	VOLTAGE	WEIGHT (kg) Nett Gross
	L	W	H				
RD-350	148	80	98	500 ~ 600	3200	380V/3P/50Hz	500 / 560



Ribs Cutting Machine

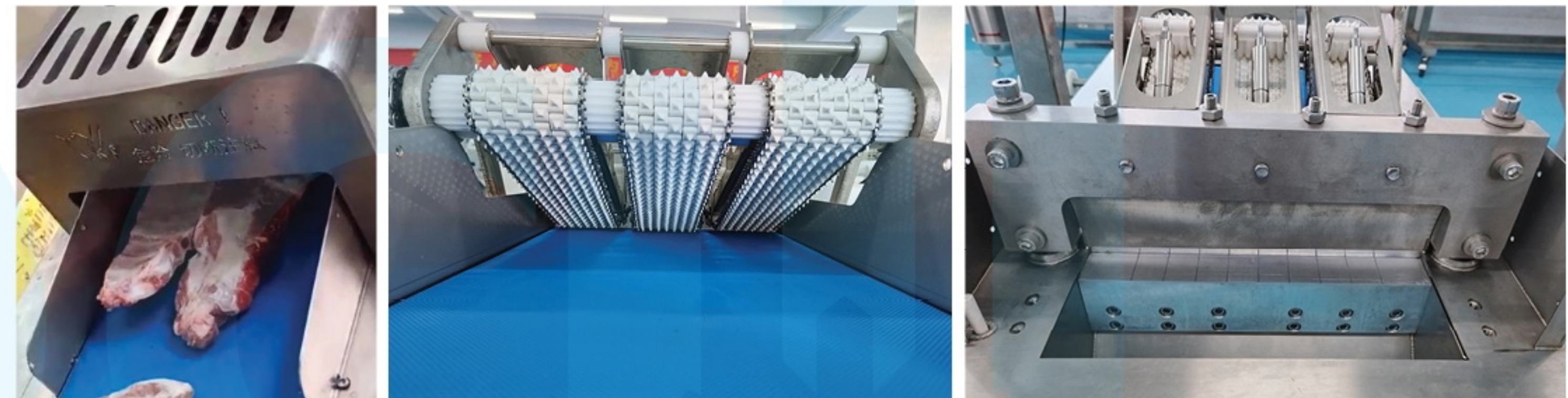
Mesin pemotong ribs (iga sapi/tulang rusuk)



PG-325E

Features

- Include one set of dicing blade (blade set+blade)
- Include blade set grid size: 25 mm
- Blade material steel
- Emergency stop
- Stainless steel S/s 304
- Castor with stopper
- Feeding port size: 30x70 cm



Set Dicing Blade

Optional Blade (Exclude)

- Additional Set Dicing Blade = @Rp. 49.000.000,-
- Recommended ribs/meat temperature: -5 ~ 0°C
- Tebal tulang (bone thickness): max. 5 mm

TYPE	DIMENSION(cm)			CAPACITY (Kg/hour)	WATT	VOLTAGE	WEIGHT (kg) Nett Gross
	L	W	H				
PG-325E	100	59,5	145	350	3000	380V/3P/50Hz	200 / 380

Meat Cutting (Slice) Machine

Mesin pemotong / pengiris daging beku



KP-17

Features

- Digital controller
- Cutting thickness: 2~30 mm, Cutting speed: 155 rpm
- Length of the feed inlet: 70 cm
- Include smooth blade for frozen meat cutting, material steel
- Maximum cutting size meat: 170*170MM
- Body S/s 304
- Adjustable feet, transparent cover lid for feed inlet / outlet



Smooth blade



Serrated blade

Optional Blade (Exclude)

- Blade Bergerigi (serrated) untuk pemotongan tulang iga (bone thickness) : max. 5mm = @Rp. 31.500.000,-
- Disarankan produk daging beku dengan suhu : -1 ~ -3°C
- Lebar irisan ditentukan oleh lebar produk yang dipotong dan tidak boleh melebihi 17 cm, kecepatan pemotongan dapat diatur

TYPE	DIMENSION(cm)			CAPACITY (Kg/hour)	WATT	VOLTAGE	WEIGHT (kg) Nett Gross
	L	W	H				
KP-17	170	75	125	500 ~ 800	3700	380V/3P/50Hz	350 / 400



Manual Sausage / Churros Filler

Mesin manual untuk mencetak adonan sosis dan churros

MANUAL



Features

- Stainless steel body
- Includes 3 stuffing funnel sizes Ø(13,6mm/16,8mm/22,5mm)
- Manual hydrolic
- Vertical design saves space



TYPE	DIMENSION (cm)			CYLINDER (cm)	CAPAC. (L)	WEIGHT NW/GW (kg)
	L	W	H			
MS-5YG	31	27	65	Ø 14 x 32	5	12 / 13
MS-7YG	31	27	77	Ø 14 x 46	7	13 / 14

Hydraulic Sausage Filler

Mesin untuk pembuat sosis, ham & salam

Features

- Body stainless steel
- Hydraulic System
- Soft Vibration
- Tube Capacity 26 L

TYPE	DIMENSION (cm)			BOWLØ (cm)	CAP. (kg/hour)	WATT (220V/1P)	NW/GW (kg)
	L	W	H				
SF-260	64	48,5	124	26	400	1100	160 / 180



S/s Poultry Feather Remover

Features

- Incredibly machine poultry feathers (birds, chickens, ducks etc.)
- Stainless steel body of 0.8 MM
- Suitable for Restaurants, Hotels, Catering etc.

Quality Improved



TYPE	DIMENSION (cm)			CAPACITY (kg/minute)	WATT	VOLTAGE	WEIGHT (kg) Nett Gross
	L	W	H				
SX60-750W	62	62	93	12	750	220V/50Hz	58 / 68



Meat Balls Mixer

Mesin pengaduk/pencampur adonan bakso



Features

- Drum 2 (two) layers, outer layer filled with cold water / ice for meatballs freshness
- Crisp & brighter colors Speed: 2800 rpm
- Stainless steel drum



SJ-18, SJ-22

MODEL	DIMENSION (cm)			PRODUCTION CAPACITY (kg/cycle)	POWER (Watt)	VOLTAGE	WEIGHT (kg) Nett Gross
	L	W	H				
SJ-18	32	32	82	2	1500	220V/50Hz/1P	23 / 34
SJ-22	37	39	83	3	2200	220V/50Hz/1P	30 / 38

Meat Balls Forming



SJ-280



Mesin Pencetak Bakso ini sangat efisien, dapat mencetak bakso ~ 280 butir/menit atau 16.800 butir/jam

Ø Ukuran Bakso: 18, 26 & 39 mm

MODEL	DIMENSION (cm)			PRODUCTION CAPACITY	POWER (Watt)	VOLTAGE	SPEED (rpm)	WEIGHT(kg) Nett Gross
	L	W	H					
SJ-280	75	45	125	± 280 pcs/minutes	1500	220V/1P/50Hz	1420	74 / 84



Meat Seasoning Mixer

Mesin pencampur daging dengan bumbu



Features

- Machine for mixing meat/seafood with seasonings, such as: Marinate chicken, black pepper meat, etc.
- The process is fast, hygienic and evenly mixed
- Stainless steel cabinet
- Production capacity: + 5 kg / cycle
- Bin volume: 20 L



HMC-837

TYPE	DIMENSION			WATT (220V)	WEIGHT (kg)
	L x W x H (cm)				
HMC-837	95	66	91	180	51/57

Vacum Meat Tenderizer

Mesin pelunak / pelembut daging



Features

- Equipped with a vacuum system, it will enlarge the pores of the meat/ vegetable so that it is easy to absorb the spices to the core of the meat, so perfect mixing.
- Vacuum system also works as a meat tenderizer
- Bin capacity: 20 L
- Mixing time: 15 ~ 20 minutes



HMC-809

TYPE	DIMENSION			WATT (220V)	WEIGHT (kg)
	L x W x H (cm)				
HMC-809	95	86	91	300	62,5/71

Vacuum Tumbler



SERI DY-GR

Mesin untuk mencampur daging / seafood dengan bumbu, seperti : ayam kuning, ayam goreng, daging lada hitam, sosis dan lainnya. Dengan sistem vacuum, akan memperbesar pori-pori daging / sayur sehingga mudah menyerap bumbu hingga ke inti daging, hasil pencampuran jadi sempurna. Sistem vacuum, juga berfungsi sebagai pelembut daging, daging menjadi lebih empuk & lezat.

- Lama pencampuran : 15 ~ 20 menit
- Vacuum Degree : 0,004 ~ 0,08
- Speed : 7,9 rpm

Bisa bolak balik : Posisi balik mengeluarkan produk / dicuci

Note :
Material yang berhubungan dengan produk makanan terbuat dari S/s 304

TYPE	DIMENSION (cm)			CYLINDER (cm)	CAPACITY / CYCLE	CAPAC. (kg/hour)	VOL. (L)	WATT (380V/3P)	NW/GW (kg)
	L	W	H						
DY-GR-100	110	60	105	Ø60 x 70	50-60 Kg	100	200	1500	85 / 109
DY-GR-200	145	80	135	Ø80 x 88	100-120 Kg	200	450	1500	140 / 178
DY-GR-300	140	90	155	Ø80 x 100	150-180 Kg	300	500	2250	180 / 223
DY-GR-500	175	100	155	Ø100 x 140	250-300 Kg	500	1000	2250	240 / 293

Manual Hamburger Meat Former



Patty paper



HF-100A

TYPE	DIMENSION			CAPACITY (pcs/cycle)	MOULD Ø (cm)	NW/GW (kg)
	L	W	H (cm)			
HF-100A	28	21,6	27,5	1	10	3,9 / 4,6

Automatic Nugget/Burger Former

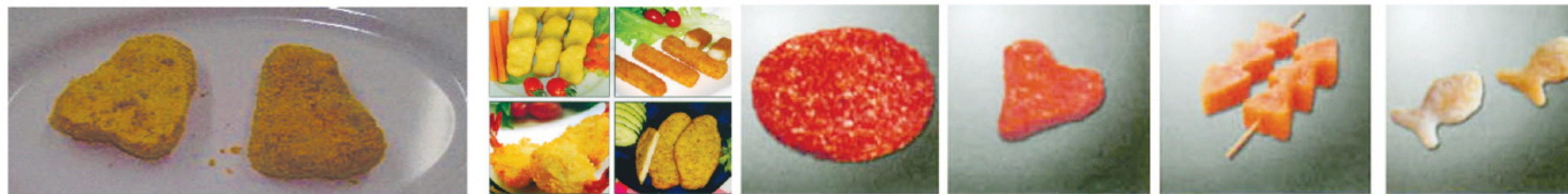
Mesin pencetak Nugget dan Hamburger kapasitas besar, praktis dan efisien

Features

- Stainless steel body
- Includes 1 pcs Ø10 CM round molding standard
- Add molding Price: Rp. 11.450.000



Contoh Bentuk Hamburger



PATTY-100-III

TYPE	DIMENSION (cm)			CAPACITY		POWER (Watt)	VOLTAGE	NW/GW (kg)
	L	W	H	Tank	Mould			
PATTY-100-III	71,5	60	140	32 L	2100 pcs/hour	550	3P/380V	100 / 150

Bone Crusher

Mesin penghancur tulang hewan baik kering maupun segar, seperti: tulang sapi, tulang kambing, tulang ayam, dll. yang menjadi partikel-partikel kecil berukuran 6 MM (Untuk menjadi pasta perlu diproses dengan Colloid Mill). Biasanya dijadikan campuran pakan ternak / ikan.



SGJ-300, SGJ-360

MODEL	DIMENSION			POWER (Watt)	WEIGHT (kg)
	L	W	H (cm)		
SGJ-300	40	70	109	4000V/380V	100 ~ 200
SGJ-360	100	79	150	7500V/380V	200 ~ 400



Abon Machine

Untuk membuat abon yang bermutu daging harus dipresto terlebih dahulu, kemudian diproses dengan mesin berikut :

Meat Shredding (Drawing Machine)

Mesin ini untuk menarik / mencabik daging untuk menghilangkan seratnya



TSJ-140

Features

- Stainless steel body
- Drum speed (1): 340 rpm, drum speed (2): 850 rpm
- Castor
- 2 steering
- 380V/3P/50Hz



Meat Floss Fryer

Mesin untuk mengeringkan atau menggoreng daging cabikan menjadi abon, hasilnya sudah menjadi abon tapi berbentuk bola-bola kecil



CSJ-3

Features

- Body stainless steel 304
- Blade speed: 12~15 rpm



LOW PRESSURED



Fluffy Machine

Mesin lanjutan untuk proses abon bentuk bola-bola kecil menjadi lembut seperti kapas (Abon sudah sempurna)



CSJ-900



CSJ-1

Features

- Body stainless steel 304
- Blade speed: 50 rpm



TYPE	DIMENSION (cm)			CAPACITY (kg/hour)	POWER		WEIGHT (kg)
	L	W	H		Gas	Listrik	
TSJ-140	95	50	110	300 Kg/hour	-	2200 W / 380V	100 / 150
CSJ-3	100	100	105	70 L/cycle	45 kW	2200 W / 380V	150 / 200
CSJ-900	175	95	125	100 / 1	-	1500 W / 380V	150 / 200
CSJ-1	175	95	125	10 Kg/cycle	-	1500 W / 380V	150 / 200



Fish Processing Machine

Fish Scale Remover

Mesin untuk membuang sisik ikan

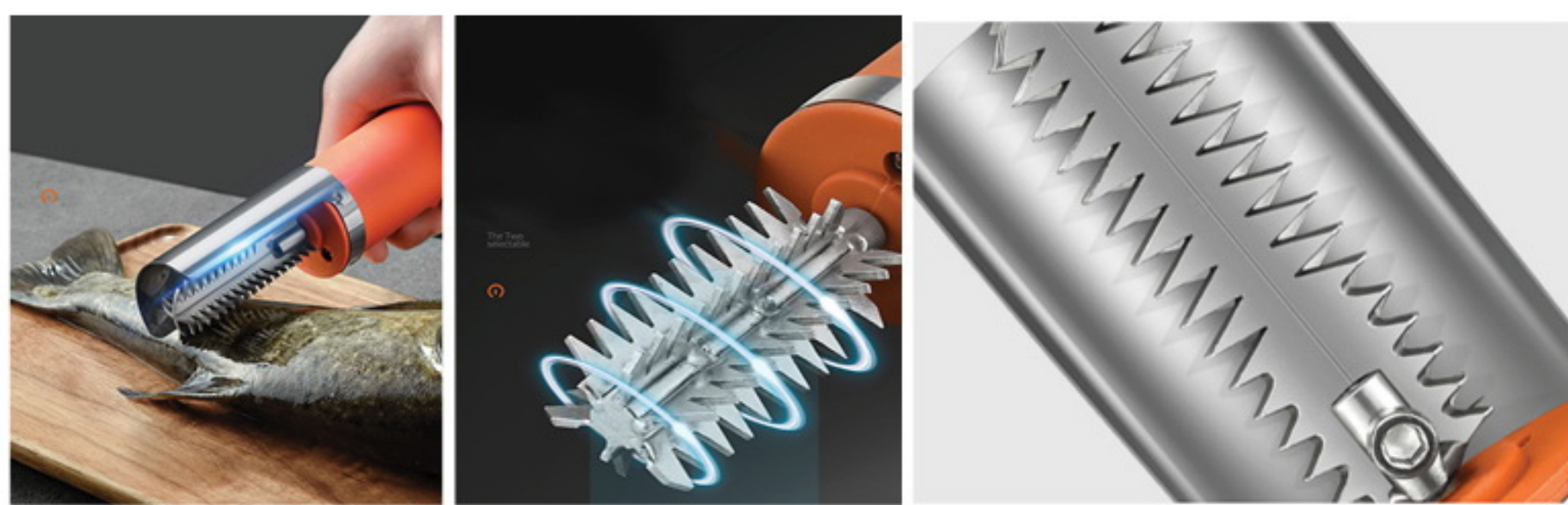


HR-85B

GARANSI
6
BULAN

Features

- Lithium battery
- Rechargeable battery
- Waterproof design (don't soak into water)
- Easy to use & clean
- Include charger
- Service time 2 hours



HR-85E

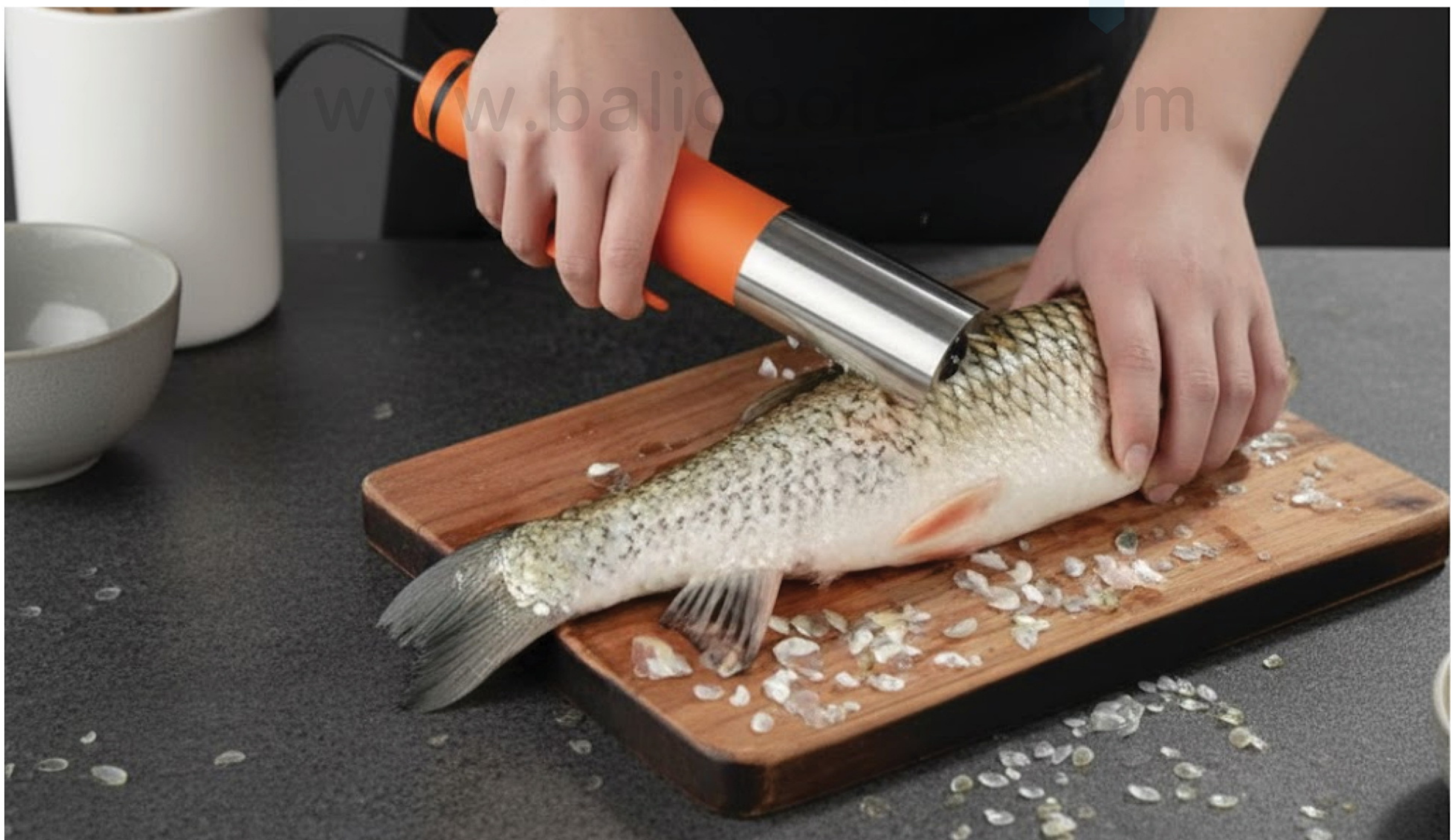
GARANSI
6
BULAN

Features

- DC mode with adapter
- Waterproof design (don't soak into water)
- Easy to use & clean
- Service time 2 hours



TYPE	DIMENSION (cm)		SPEED (rpm)	WATT	VOLTAGE	NW/GW (kg)
	Diameter	L				
HR-85B	Ø 6	27	6000	125 W 2200mAh	220V/50Hz/1P	0,88 / 1,1
HR-85E	Ø 5,1	22	6000	125 W	220V/50Hz/1P	0,83 / 1,05



S/s Brine Injector



Injektor air garam, yang dikenal juga sebagai brine injector, adalah mesin khusus untuk menyuntikkan (injak) air garam ke dalam daging, unggas/ ayam utuh, atau ikan. Ini membantu melunakkan tekstur, meningkatkan rasa, serta volume produk. Jarum injeksinya terbuat dari stainless steel yang berkualitas tinggi.

Mesin ini sangat berguna untuk menginjek berbagai jenis daging seperti ham, barbecue, ikan, ayam, sapi, bebek, dan lainnya. Prosesnya melibatkan penggunaan pompa dan jarum suntik khusus, dengan pilihan 80 atau 120 jarum, untuk menyuntikkan brine secara merata ke dalam daging. Hasilnya adalah daging yang lebih lembut (juicy) dengan cita rasa lebih nikmat.



BI-80

Features

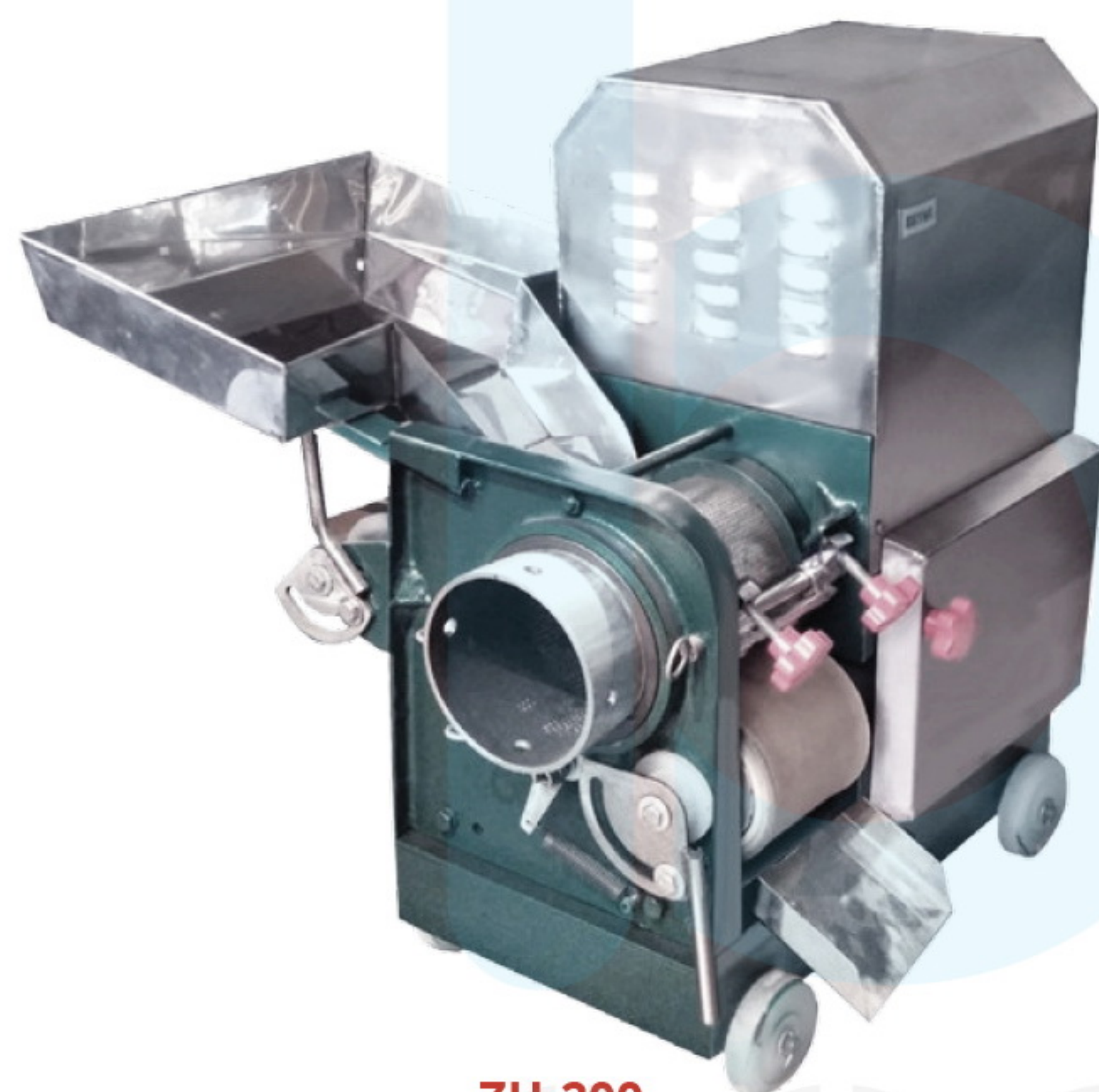
- PLC Controller
- Stainless steel body
- Pressure gauge
- Special brine pump and needles
- Conveyor
- Castor



BI-120

TYPE	DIMENSION (cm)			CAPACITY		POWER (Watt)	VOLTAGE	WEIGHT (kg)
	L	W	H	Production (kg/h)	Needles (pcs)			
BI-80	130	120	170	500~600	80	3.300	380V/3P/50Hz	280
BI-120	130	130	170	700~800	120	4.700		300

Fish & Meat Bone Separator



ZU-200

Mesin untuk memisahkan daging ikan dan tulangnya. Daging ikan yang keluar sudah lumat untuk diproses selanjutnya.

Aplikasi:

Pengolahan bakso ikan, sosis ikan, nugget ikan, kerupuk ikan dll.



Note : Buang kepala ikan, sisik & isi perutnya sebelum diproses ke mesin.

TYPE	DIMENSION (cm)			CAPACITY	WATT	VOLTAGE	NW/GW (kg)
	L	W	H				
ZU-200	80	80	86	200 kg/hour	1500	220V/50Hz/1P	180 / 210